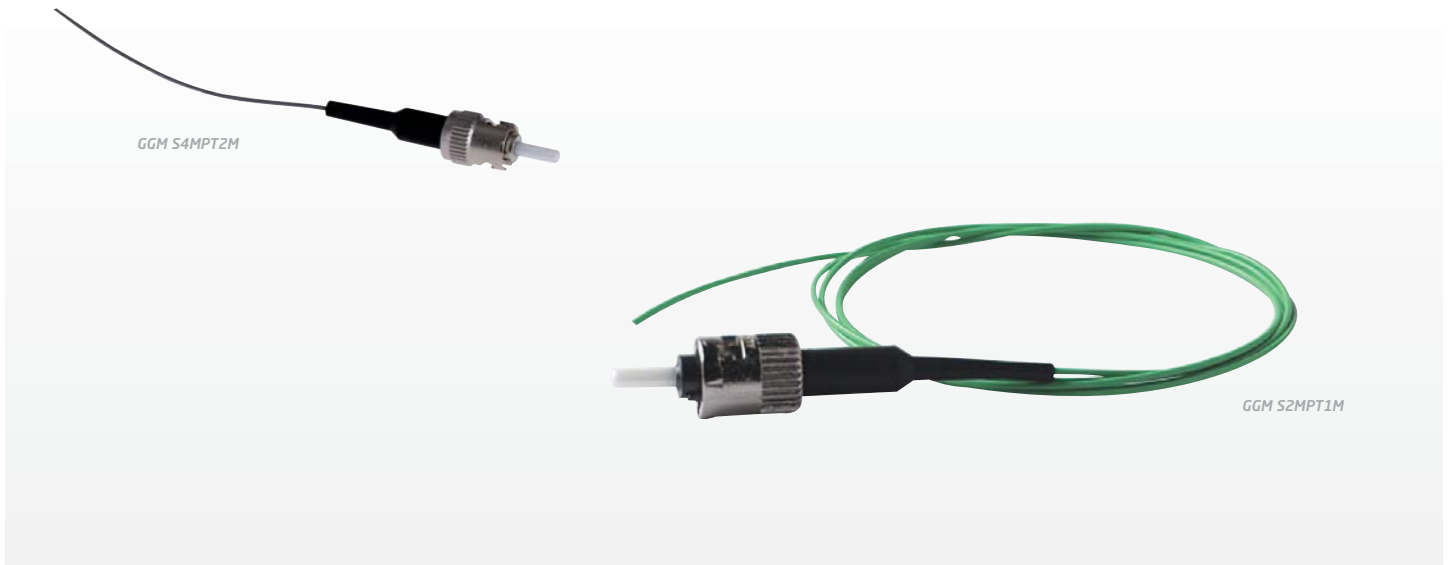


PIGTAILS ST



Thanks to a stringent quality policy & individual inspection/testing of each manufactured piece, Gigamedia patchcords offer a high level of performance at a fair price. Each patchcord is packaged individually and delivered with a unique serial number & individual IL/RL test report.

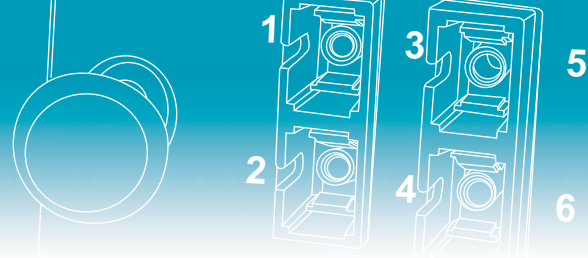
MECHANICAL PROPERTIES

	OM4	OS2	OM1	OM2	OM3
Connector body	metal	metal	metal	metal	metal
Ferule surface	convex	convex	convex	convex	convex
Core Diameter	50 ± 2,5 µm	9.2 ± 0.4µm	62,5 ± 2,5 µm	50 ± 2,5 µm	50 ± 2,5 µm
Cladding diameter	125 ± 2.0 µm	125 ± 1.0µm			
Cladding non-circularity	≤ 1.0%	≤ 1.0%	≤ 1.0%	≤ 1.0%	≤ 1.0%
Core/cladding concentricity error	≤ 1.5 µm	≤ 0.6µm	≤ 6.0µm		
Ferule material	ceramic (ZrO2) inner diameter 126µm	ceramic (ZrO2) inner diameter 127µm	ceramic (ZrO2) inner diameter 126µm	ceramic (ZrO2) inner diameter 127µm	ceramic (ZrO2) inner diameter 127µm
Polishing method	PC	UPC	PC	PC	PC

OPTICAL PROPERTIES

	OM4	OM3	OM2	OM1
Typical loss	≤ 2,7dB/km (850nm) ≤ 0,8dB/km (1300nm)	≤ 2,7dB/km (850nm) ≤ 0,8dB/km (1300nm)	≤ 2,8dB/km (850nm) ≤ 0,8dB/km (1300nm)	≤ 3dB/km (850nm) ≤ 1dB/km (1300nm)
Bandwith (MHz.km)	≥ 3500MHz.km (850nm - OFL) ≥ 500MHz.km (1300nm - OFL) ≥ 4700MHz.km (850nm - EMBC*)	≥ 1500MHz.km (850nm - OFL) ≥ 500MHz.km (1300nm - OFL) ≥ 2000MHz.km(850nm - EMBC*)	≥ 500MHz.km (850nm - OFL) ≥ 500MHz.km (1300nm - OFL)	≥ 200MHz.km (850nm - OFL) ≥ 500MHz.km (1300nm - OFL)
Typical insertion loss	≤ 0,15dB	≤ 0,15dB	≤ 0,15dB	≤ 0,15dB
Max. insertion loss	≤ 0,25dB	≤ 0,25dB	≤ 0,25dB	≤ 0,25dB
Typical Return Loss	≥ 35 dB	≥ 35 dB	≥ 35 dB	≥ 35 dB
Mating cycles	1000 (variation 0,2dB)	1000 (variation 0,2dB)	1000 (variation 0,2dB)	1000 (variation 0,2dB)

*EMBC calculated thanks to the DMD mask Method



Performances required by ISO 11801 OS1 & OS2 categories are both fully satisfied.

OTHER SPECIFICATIONS OF FIBER ON REQUEST

	OS2		
Typical cable Loss	≤ 0.39dB/km (1310-1625nm)	≤ 0.25dB/km (1550nm)	
Chromatic dispersion	≤ 3 ps/nm*km(1285-1330nm)	≤ 6 ps/nm*km (1270-1340nm)	≤ 18ps/nm*km (1550nm)
Typical Insertion Loss	≤ 0,15dB		
Max. Insertion Loss	≤ 0,25dB		
Typical Return Loss	≥ 50dB		
Mating cycles	1000 (variation 0,2dB)		

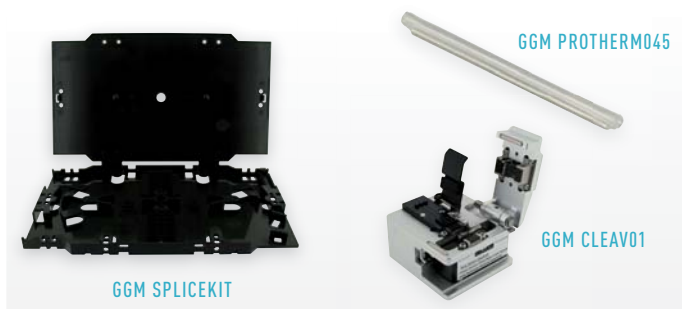
CABLE MECHANICAL PROPERTIES

	OM4	OS2	OM3	OM2	OM1
Construction			tight buffer 900µm "Easy strip"		
Tensile strength			3N		
Crush resistance			0.1N/mm, max 1N/mm short term		
Min. Bending radius during installation			30mm		
Temperature range during operation			-5°C à +60°C		
Outer sheath material			LSHF		
Outer sheath color	Aqua	Yellow	Grey	Green	Blue

COMPLIANCE

- IEC 61754-2 ; Bellcore/telcordia GR-326; EIA/TIA 604-2
- EIA/TIA 568; ISO/IEC 11801 2nd Ed, EN 50173; JIS C5973 F04; ITU-T G651; ITU-T G652D; ITU-T G652B
- IEEE 802.3

ACCESSORIES



PART NUMBERS

P/N	DESCRIPTION			
GGM S1MPT2M	Pigtail ST	50/125	OM2	2m
GGM S2MPT1M	Pigtail ST	62.5/125	OM1	1m
GGM S2MPT2M	Pigtail ST	62.5/125	OM1	2m
GGM S3MPT1M	Pigtail ST	9/125	OS2	1m
GGM S3MPT2M	Pigtail ST	9/125	OS2	2m
GGM S4MPT2M	Pigtail ST	50/125	OM3	2m

P/N	DESCRIPTION
GGM SPLICEKIT	Splice tray kit for 2x6 fusion splices + cover, strain relief comb & fixing clips
GGM PROTHERM045	45mm heat shrinkable tube
GGM PROTHERM060	60mm heat shrinkable tube
GGM CLEAV01	Fiber optic cleaver (250/900µm fiber)